

# CITY'S FIRST AC SUBWAY TO COME UP BETWEEN DOMESTIC AIRPORT AND WEH

Mumbai is set to get its first air-conditioned pedestrian subway, with escalators, as a part of the underground Metro project. The subway will be between the airport's domestic terminal Metro station and Western Express Highway, at Vile Parle. **Manthan K Mehta reports**

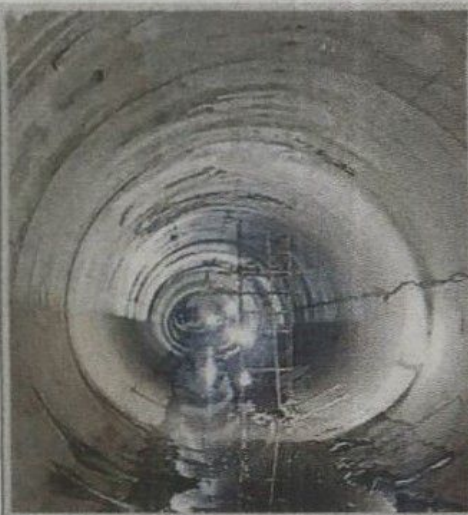


Artist's impression

## AIM OF THE PROJECT

**300** metres separate Western Express Highway and the T1 (domestic airport terminal) Metro station

- A subway will provide easy connectivity to flyers heading for the airport from Vile Parle or by passing through the area



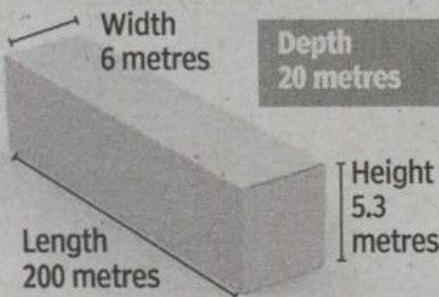
- Such flyers will not need to stop at red lights to cross Western Express Highway



- The pedestrian subway will also allow Metro users to directly enter or exit WEH, facilitating better spaces for alighting from or boarding vehicles

- Being airconditioned, the subway will provide ambient comfort

## THE SUBWAY



**10** columns of people would be able to walk inside the subway

**4** escalators to be provided



**2** for ascending | **2** for descending

**◀** The subway will start once the Metro 3 line starts operations, tentatively in 2024

“Mumbai Metro first wanted to demolish a public toilet on WEH to build the subway, but reworked the design to save the utility — A METRO OFFICIAL