

# Steel-deck roads to unclog stretches hit by Metro work

**UNIQUE METHOD** 235-metre temporary stretch on DN Road set to open in Feb

Tanushree Venkatraman

tanushree.venkatraman@hindustantimes.com

**MUMBAI:** In a first-of-its-kind move to ease traffic in the city, motorists can soon drive on steel decks on DN Road in south Mumbai as the Mumbai Metro Rail Corporation Ltd (MMRCL) carries out station work for the 33.5-km, fully underground Metro-3 (Colaba-Bandra-Seepz) corridor.

According to its traffic management plan, MMRCL has started building a temporary road made of steel plates which will be supported by king posts. These are central vertical posts that will support the decks. The road between the Siddharth College on DN Road and the Purushottamdas Thakurdas Marg will be 235-metre-long and 7.5-metre-wide.

The deck is being made on the side of the road which is currently barricaded for piling work. Once the temporary road is built, MMRCL can start work on the other side of the lane.

After the station works are completed, contractors will reinstate the road by resurfacing it. A crossroad that falls on DN Road will also be covered with steel decks by creating a junction so as not to restrict traffic.

SK Gupta, director (projects) of MMRCL, said, "We are making sure that traffic is unhindered by using the best engineering solutions. The first part of the deck will be operational by the first week of February and the entire lane by the end of the month." Gupta said the authority is also looking at covering the deck with a mastic layer or a thin asphalt layer, to reduce the noise levels when a vehicle passes by.

The entire deck at DN Road will be built at a cost of Rs13.3 crore and 1,330 metric tonnes of steel will be used.

While the traffic management plan for 26 stations is different depending on their location, MMRCL is planning to make similar decks at Mahalakshmi, Mumbai Central, Dadar and Marol.

The Metro-3 corridor chalked out by the state government will connect south Mumbai to the north and is expected to ease the burden on the suburban railway network.

It is the only underground corridor currently being executed in the city.

**THE ENTIRE DECK AT DN ROAD WILL BE BUILT AT A COST OF ₹13.3 CRORE AND 1,330 METRIC TONNES OF STEEL WILL BE USED**

## FIRST-OF-ITS-KIND ROAD IN CITY

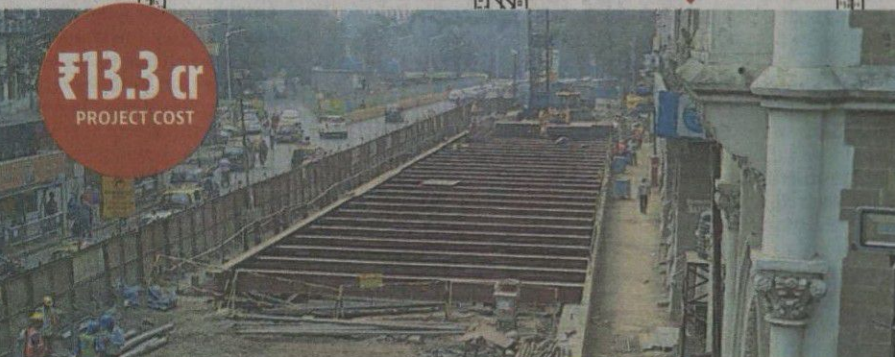
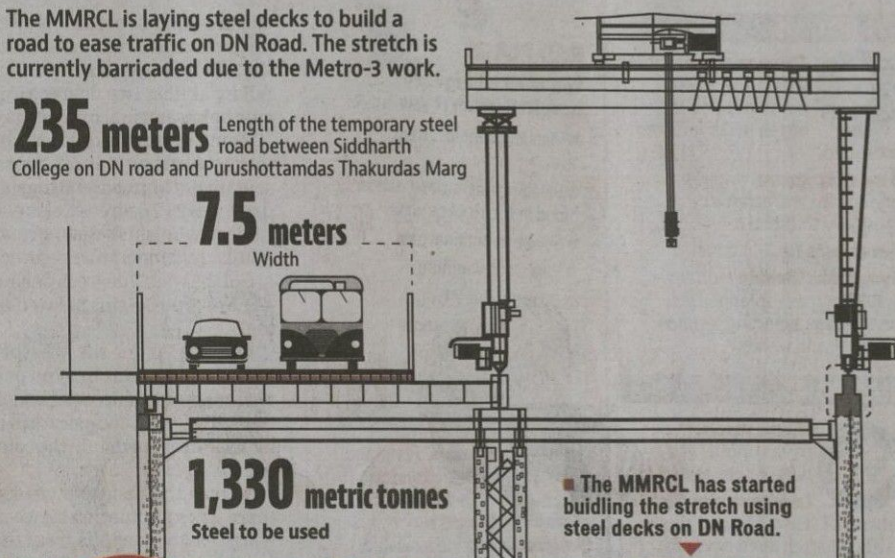
The MMRCL is laying steel decks to build a road to ease traffic on DN Road. The stretch is currently barricaded due to the Metro-3 work.

**235 meters** Length of the temporary steel road between Siddharth College on DN road and Purushottamdas Thakurdas Marg

**7.5 meters** Width

**1,330 metric tonnes** Steel to be used

■ The MMRCL has started building the stretch using steel decks on DN Road.



## THE PROJECT SO FAR

It has been one-and-a-half years since the Metro-3 works started

**74** pile boring machines, 73 excavators and 32 mobile cranes, including those with a capacity of 500 metric tonnes to 700 metric tonnes, are in operation at the various sites

**Seven tunnel boring machines (TBMs)** are at various sites, with five of them already operational. Another will be pressed into operation by early next month

**Around 1,500 project** affected families have been moved

**426,000 cubic metres** of excavation has been completed

**220 metres** of tunnelling by TBMs has been completed

**Approximately 7,600 people**, both skilled and unskilled, are on the job. This is in addition to general consultants, MMRC personnel, managers and engineers of the civil contractors and various vendors working on the project

## Metro-3

Length: **33.5 km**

Stations: **27**

Metro-3 will connect six business districts, many educational institutes, the domestic and international airport

Project cost: **₹23,136 cr**

## FUNDS

The project is partially being funded by JICA (Japan International Co-operation Agency) through a loan of Rs13,235 crore. The rest is being borne by the Central and state governments

## MMRC RAISES AWARENESS

With the project facing flak from many activist groups, the Mumbai Metro Rail Corporation Ltd (MMRCL) on Tuesday conducted a signature campaign to spread awareness about the Metro-3 project

It received 450 signatures

The MMRCL set-up an information kiosk at Churchgate railway station

Ashwini Bhide, managing director, MMRC said, "We were pleased to witness the overwhelming response from commuters, including students. This kind of support motivates us to execute the challenging project more



effectively."

Many students participated in the campaign

Since the beginning of the project, MMRCL has been in controversy owing to a proposed car-shed at Aarey which will require hacking of 3,500 trees.