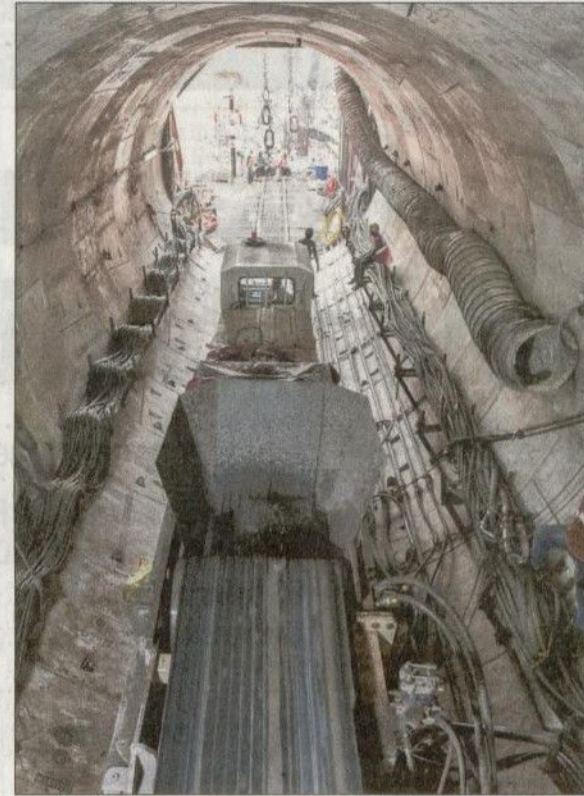
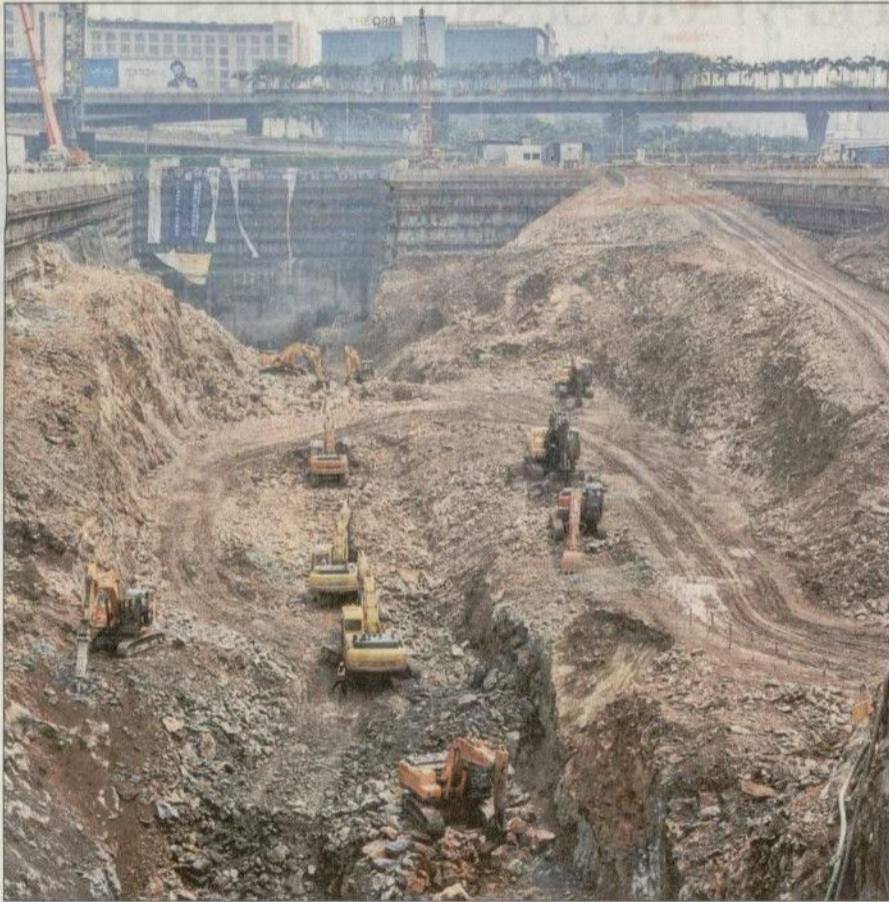


# City sees light, bright travel future at end of these tunnels

With numerous Metro lines all set to connect Mumbai and its suburbs, **Kunal Patil** gives a sneak peek into the underground tunnels that are at the backbone of the mega plans for a smoother commute



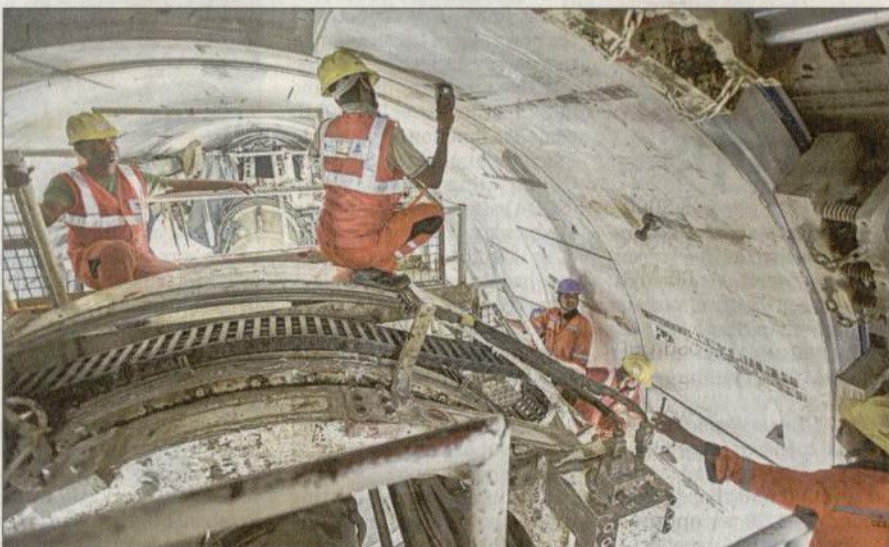
▪ (Left) Colaba to Seepz via Bandra within minutes? It doesn't come easy. It has been almost a year since the work on the tunnel at Nayanagar in Mahim started. The 51-km tunneling will need 2.8 lakh separate segments. Ditto for the Airport Metro (above). Building a tunnel from Pali Ground in Marol to the T2 international airport took almost eight months. End result? A 1.26km tunnel and 1.5 lakh cubic meters of muck.



▪ Heard of lying low to achieve great heights? The same principle works while going 25-m deep at T2.



▪ Amid the grime, life down under has to offer some comfort. It comes in the form of an air-conditioned cubicle for workers to have lunch.



▪ It's all a matter of balance. Be it handling the earth's pressure or the one that comes from deadline.



▪ Mission impossible? Not really when the tunnel at T2 is ready and the only aim is to ensure fast and comfortable travel for lakhs.